

# Charlton Place and Camden Passage

Improvements update

Changes to Experimental Traffic Order



## **Dear residents, businesses and market traders,**

Charlton Place and Camden Passage have a unique character, with a proud history of independent stores, a strong sense of community and a wealth of heritage. We are committed to supporting independent businesses and sole traders who together make up the distinctive local economy of the area.

Based on the feedback we have received, we have taken the decision to implement a new set of proposals to deliver improvements across the area including:



### **'Local Access Only' zone to prevent through traffic on Charlton Place**

This means that Charlton Place will be always open to any local resident or business, delivery driver, visitor or customer who wishes to access a business, trader or home in Charlton Place, Camden Passage, Shalford Court or Noble Yard, whilst helping to reduce traffic volumes.

**Delivery drivers and taxis will still be directed to Charlton Place as long as they input a local address in their sat-navigation.**

We will continue to monitor the traffic volumes and impacts to ensure the scheme is delivering on the expected positive impacts of the project.



### **Weight restriction above 3.5 tonnes (HGVs)**

To reduce the risk of property damage and traffic danger we will implement a weight restriction for vehicles above 3.5 tonnes. We will permit local exemptions for business and residents where appropriate. We will be in touch directly with affected businesses about the exemption process.



## **Reviewing the proposed public seating**

To support people with reduced mobility to access and visit Camden Passage, we are proposing to install two single seats to provide a resting point for older and disabled visitors. This will make Camden Passage and Charlton Place more inclusive.

Please note that seats will be bolted on the new pavement area and are easily removed if reports of antisocial behavior increases.



## **Raingardens in Charlton Place**

Raingardens are a sustainable approach to managing rainwater runoff, helping to protect water resources and create a healthier and greener environment.

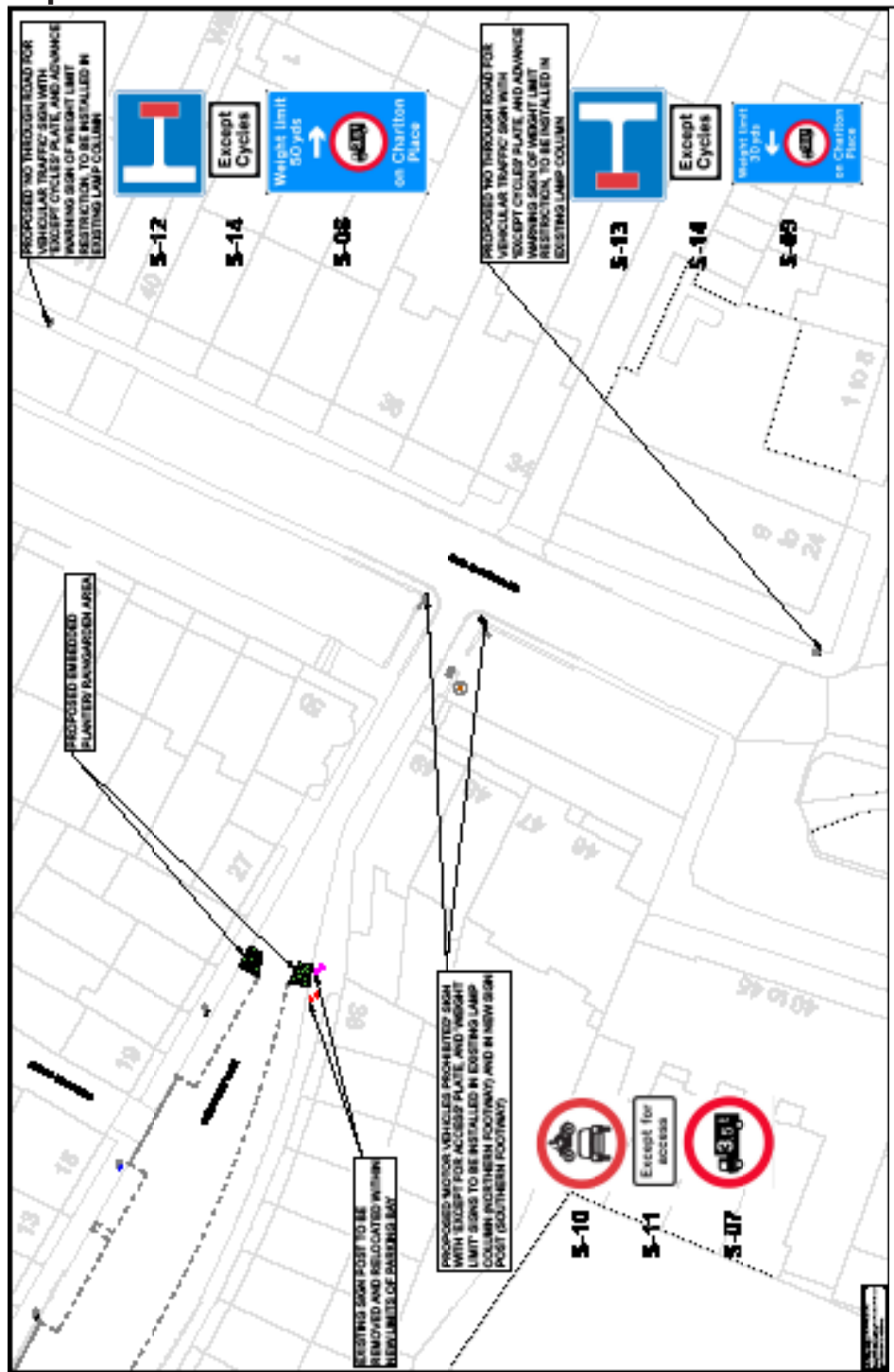
In the southeastern section of Charlton Place we will construct two raingardens from September 2023, during the new planting season.

We will provide further updates ahead the implementation as this will require at least 2-3 days for completion.

We would like to invite the local community for a planting day for which details will be communicated ahead of the event.



# Map 1: Southeastern section of Charlton Place



## Loading, disabled and visitors parking



**Map 2: Loading bays around Camden Passage**

**Loading:**

- Permanent loading bay

**Loading allowed:**

- Loading on single/ double yellow lines
- Loading on resident, shared use and short stay bays

Note that **Blue Badge holders** can park in all the categories above.

For more information about parking and loading please visit: <https://www.islington.gov.uk/parking/where-to-park>

## Map 3: Charlton Place and Camden Passage parking



**Parking bays:**

- Residential parking bays
- Shared residential and short stay bay
- Short stay bay
- Loading bay

## Object to ETO Process

The 'Local Access Only' zone and weight restriction for lorries above 3.5 tonnes will be introduced under an Experimental Traffic Order (ETO) trial. Once the ETO comes into force, there is a six-month period in which objections can be made. Any formal objection to a specific ETO must be in writing and must state the grounds on which it is made.

To make an objection please send it to us in writing between 4 August 2023 and 4 February 2024 by:

**Email:** [Environment@islington.gov.uk](mailto:Environment@islington.gov.uk) or

**Post:** Public Realm, 1 Cottage Road, London, N7 8TP.

Please note that any formal objection that is submitted may become a public document and could be published. We will continue to monitor Charlton Place and welcome feedback from local people.

Yours sincerely,



**Councillor Rowena Champion**

Executive Member for Environment, Air Quality and Transport

To find out more about Charlton Place and Camden Passage scheme please visit [www.islington.gov.uk/CharltonPlaceConsultation](http://www.islington.gov.uk/CharltonPlaceConsultation) or scan QR code

If you have further questions, drop us a line at [StPetersLTN@islington.gov.uk](mailto:StPetersLTN@islington.gov.uk).

Do you need this information in another language or reading format such as Braille, large print, audio or Easy Read? Please contact us at [StPetersLTN@islington.gov.uk](mailto:StPetersLTN@islington.gov.uk) or write to: **Public Realm, 1 Cottage Road, London, N7 8TP.**

