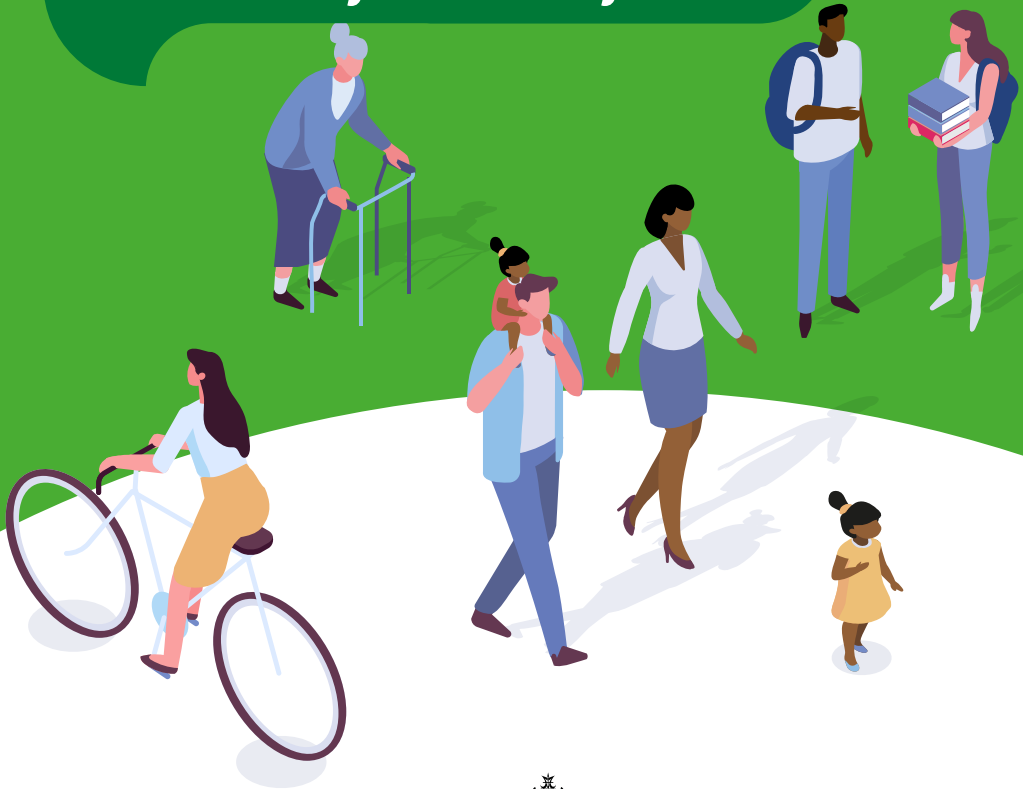


# Bath Street Traffic Flow Reversal Consultation

Have your say by 11.59pm  
on Sunday 16 January 2022



**ISLINGTON**

 For a more equal future

## Dear resident,

Islington's streets belong to everyone. We have been listening to local people's feedback who have told us they want cleaner, greener and healthier streets for all.

As technology has changed, and with increased use of Sat Navs and apps like Google Maps and Waze, we've seen more and more traffic looking for short-cuts along residential streets. Traffic on local roads in London including many parts of Islington rose by 72% between 2009 and 2019.

Bath Street has seen a significant increase in traffic volumes from the use of the road as a cut through. This is partly due to the impacts of the transformation of Old Street roundabout which has increased traffic, noise and pollution levels on Bath Street. Consequently, the council is developing a proposal to reduce these negative impacts and improve safety to make it easier to walk, cycle, and use buggies and wheelchairs.

## Proposed changes to Bath Street

The council in collaboration with TfL, are taking action to help eliminate through-traffic on Bath Street. Our plans include changes to how vehicles access Bath Street. **Vehicles will no longer be able to travel northbound along Bath Street between Old Street and Peerless Street.** Northbound access for cyclists and the 812 bus remains unchanged. The northbound flow on Bath Street between Peerless Street and City Road also remains unchanged.

No roads are being closed to motor traffic and all addresses will remain accessible by car and van but you or other drivers will need to access through a different route. We are not proposing any changes to kerbside access as part of this scheme, so loading bays will not be affected.

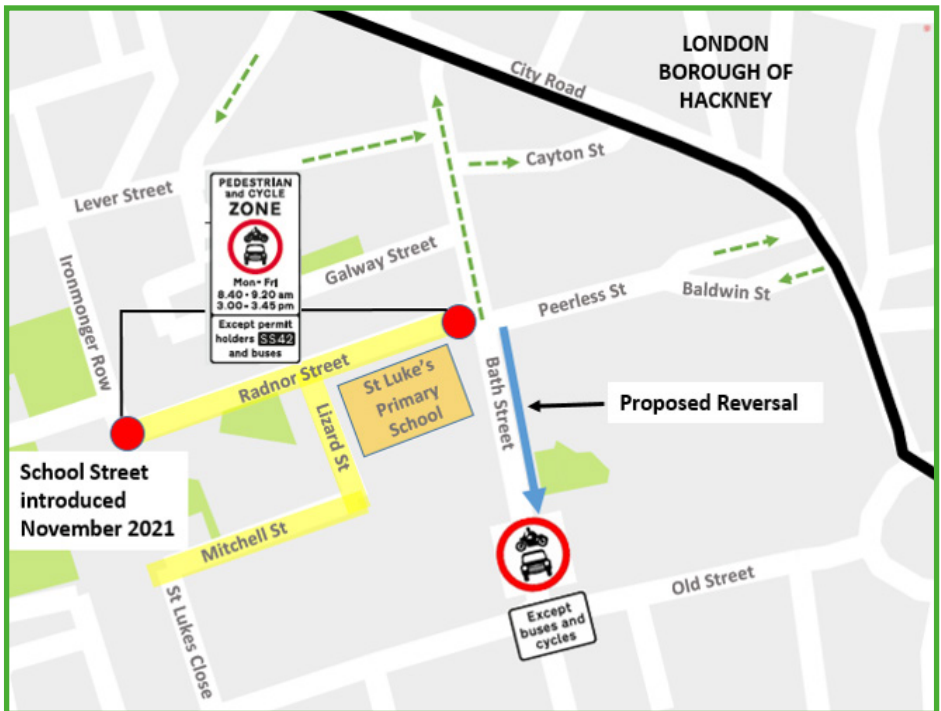
The map (on the next page) shows the extent of the scheme and proposed traffic measures. You will still be able to drive on Bath Street – the only change is that a 'no motor vehicles' sign will be installed

at the entrance from Old Street, which will result in a significant reduction in traffic cutting through the area between main roads.

The results of the consultation will be published online. If the project goes ahead, implementation will take place between March – April 2022. Before implementation we will send out further information and notice of works starting.

On 1 November 2021, School Street traffic restrictions were introduced at Radnor Street, Lizard Street, Bartholomew Square and Mitchell Street. These restrictions have been introduced using an Experimental Traffic Order and are subject to a separate consultation process. The proposed reversal project will provide an opportunity to review the School Street scheme and could facilitate the expansion of the School Street provisions at Bath Street.

## Map of proposed traffic changes to Bath Street



## We welcome your views

We are seeking your views on introducing the proposed traffic reversal to Bath Street. We want to hear from local people, community groups and businesses on how you think this measure will impact you.

You can respond to the consultation

- through our online survey at: **[www.islington.gov.uk/bathstreetconsultation](http://www.islington.gov.uk/bathstreetconsultation)**
- or send us your comments in writing to: Transport Planning & Active Travel, Environment, Islington Town Hall, Upper Street, London N1 2UD.

Additional information is available at the above website. If you have any further questions regarding the proposal, please contact Faz Mussa by email at **[faz.mussa@islington.gov.uk](mailto:faz.mussa@islington.gov.uk)** or by telephone on **020 7527 8921**.

Please respond before 11.59pm on Sunday 16 January 2022 when the consultation period closes.

Scan the below QR code with your phone to get access to the consultation questionnaire.

We look forward to your comments.

Yours faithfully

**Eshwyn Prabhu**  
Interim Head of Transport Strategy  
and Active Travel



**Do you need this information in another language or reading format such as Braille, large print, paper copy, audio or Easy Read? Please contact 020 7527 2000.**