

CREATING A FAIRER FUTURE FOR THE CALLY

Workshop Report for the Jean Stokes Community Centre

WE ARE
CALLY

Making the Jean Stokes Community Centre a space for all

Public Works, the architects, gave a presentation for Jean Stokes Community Centre. The key points presented during the workshop were:

Accessibility, visibility and moving about:

- The centre lacks a visible and recognisable entrance. A number of local groups who regularly use the centre, have made it clear to us that the main entrance on Carnoustie Drive is not easy to find or very accessible. Many of the current visitors use the entrance at the back of the centre.
- It is not easy to move around the centre. You can only go from the ground floor to the basement is by leaving the building, descending the ramp in Earlsferry Way and going into the basement through a side door.

More space for Cally VCS organisations:

- A number of Voluntary and Community Sector (VCS) organisations are already using the centre and would benefit from additional space and a more central location within the Bemerton.
- There is also a local need for affordable office and co-working space which is in the centre of the Cally.
- The Bemerton estate would benefit from improved and free access to IT services



Jean Stokes Community Centre - main entrance



Jean Stokes Community Centre - front



Jean Stokes Community Centre - back entrance



Jean Stokes Community Centre basement entrance

Monday 16 November 2020

Workshop Report for the Jean Stokes Community Centre

Proposed improvements

Public Works presented some early ideas of what could be done to improve the centre.

- Create a more welcoming main entrance that is easier to spot from the street. This would help open-up the centre allowing people to drop-in for a chat or sign-up for a class.
- Make the basement easier to get to – possibly by adding a lift or an internal staircase. This would make it easier to move around the building and make the centre feel more like one space rather than moving between two buildings.
- Open up the basement to provide brighter, more flexible and affordable office space for local community groups and residents. This could include co-working spaces and hot desking for local residents.
- Where possible, walls could be removed, creating new spaces for activities and making it easier to move around the basement.
- Increase the amount of natural light in the basement spaces to create a more comfortable working environment.
- The community centre should provide free access to IT services.

Examples of what we could do

Case study 1 - Granville Centre

- Visible and recognisable entrance
- Improved accessibility (lift and ramp)
- Improved waiting area with small community café



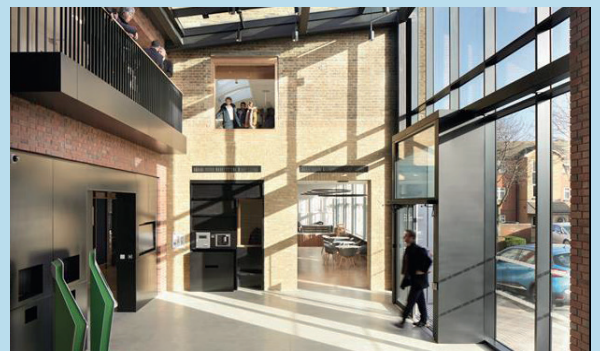
Café at Granville Centre



Entrance at Granville Centre

Case study 2 - Plumstead Centre

- Increase of natural light intake for the basement space



Plumstead Centre's entrance - Hawkins\Brown

Monday 16 November 2020

Feedback from residents about the Jean Stokes Community Centre

Do you currently use Jean Stokes Community Centre?

If yes, how often and why?

If no, what are the reasons which limit your use of the centre?

- “A number of local organisations such as Phoenix Pottery, Art Box and Help On Your Doorstep could benefit from being more central to Bemerton estate...being located in the basement at Jean Stokes could really support these groups”
- “We run workshops from the centre like yoga sessions, coffee mornings or zumba...”
- “The centre works very well for classes.. the meeting rooms and hall are a good size and they provide a safe and private space”
- “The kitchen in the centre works very well for community workshops and classes... ”

Is Jean Stokes Community Centre accessible and visible?

- “Many of our users have difficulties in finding the centre”
- “Most users access the centre from the back door as the main entrance doesn't have a lift or a ramp - the door at the back works just fine but would be better if the front was accessible too”
- “We need a noticeboard at the front of the building to find more information.. or a screen/projector”

What do you think makes a good community centre? What improvements would make the centre better for the local community?

- “The centre should be a go to place where people can go to have a bit of support.. a community anchor and hub”
- “The centre should deliver activities the community have asked for and become a space which the whole community can use”
- “Public wifi should be better and more accessible to residents”
- “Art is a real leveller and creative activities can open up the centre”
- “Adopt the reuse, reduce and recycle approach and integrate it into the whole facility”
- “Create specific cleaning/storage space inside the centre between”

What are the opportunities that an enlarged and improved community facility could offer to you and/or other local residents?

- “We are currently looking for space for our organisation and the basement could be a great option”
- “We would benefit from being based at Jean Stokes so we can meet local residents more easily”

CREATING A FAIRER FUTURE FOR THE CALLY

Workshop Report for the Jean Stokes Community Centre

WE ARE
CALLY

Next steps

You can find out more and give feedback online at:

www.islington.gov.uk/jeanstokes

Hard copies of the workshop reports and feedback forms are available at and can be returned to a new 'We are Cally' letterbox at the entrance of the Jean Stokes Community Centre.

Timeline:

Summer 2020 - Architects are appointed
Autumn/Winter 2020 - Public Consultation
Spring 2021 - Works to start on site
End of Summer 2021 - Works to finish

Residents workshops:

Following the workshop on Monday 16 November, you are invited to see and discuss our initial designs on 14 December at our next workshop.

Creating more community spaces for all at the Jean Stokes Community Centre

Online discussion

Monday 14 December, 6.00pm-7.00pm

www.islington.gov.uk/jeanstokes

The final stage of workshops will follow on 11 January before we submit a final application for Planning approval.



Basement space at Jean Stokes Community Centre

We are Cally

The improvements to the Jean Stokes Community Centre are part of We are Cally project. This is a £1.6M project aimed at shaping a fairer future for local people in the Cally area by:

- creating better opportunities for children, young people and families
- improving health and wellbeing, strengthening community connections and belonging
- creating jobs and opportunities for local people and supporting local businesses
- making public spaces greener, safer and more attractive for all to enjoy

We want to involve as many local people, community groups and organisations as possible in shaping these plans.

Contact details

If you have a query, please contact us at

Email: wearecally@islington.gov.uk

Tel: 020 7527 3858

Web: www.islington.gov.uk

Alternatively, you can contact the architects at 079 2671 0660 or

carlotta@publicworksgroup.net

If you would like this document in large print or Braille, audiotapes or in another language please call 020 7527 3858